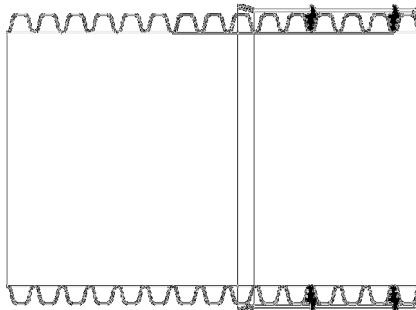
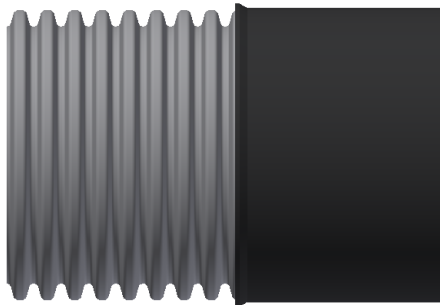




TECHNICAL NOTE

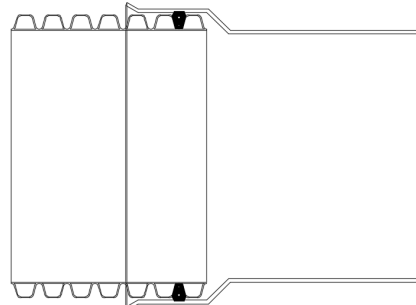
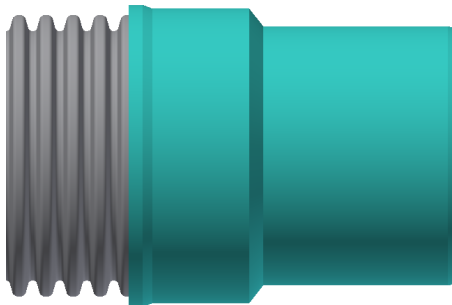
MH Adapter Guide - SaniTite® HP and HP Storm Pipe

TN 1.07
September 2019



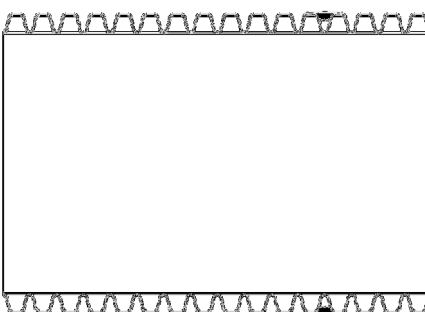
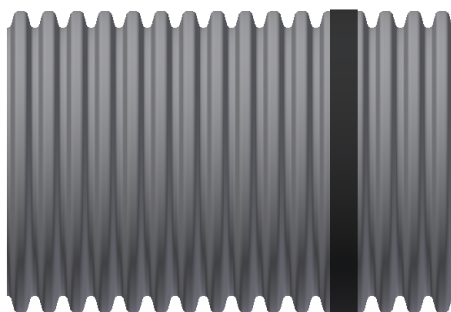
SaniTite HP Sleeve Manhole Adapter

Boot/Alok Connection
12" - 24" (XX22AAPP)
Sanitary/Storm Joint
Not Available for 21"



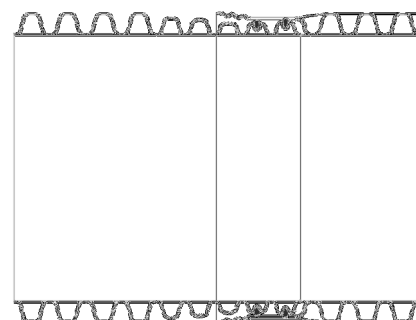
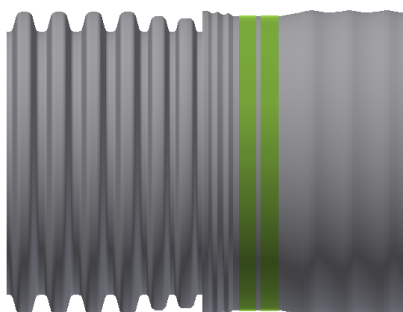
Nyloplast PVC Manhole Adapter

Boot/Alok Connection
12" - 24" (XX57AGHPU2) Sanitary Joint
12" - 30" (XX57AGHPU) Storm Joint



Corrugated Pipe Adapter Gasket

Boot Connection Only
12" - 30" (XX50PS)
Storm Joint



SaniTite HP TW to HP Storm DW

Boot/Alok Connection
12" - 60" Dual Wall
Storm Joint
30" & 60" WT; 36" & 42" requires new gasket;
48" requires 4866MGHPTWDW gasket
Coordinate w/plant to ensure correct gasket is installed prior to shipment of 36", 42", & 48"